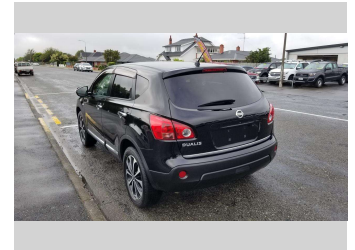


# 2012 Nissan Dualis 20G




**Darryl Phillips**  
MOTOR COMPANY  
Ph. 03 308 2441 M. 027 275 8617 www.darrylphillips.co.nz

- Trade ins are welcome**  
Easy straight forward process
- Easy & Fast Finance**  
Quick & Affordable
- Car Insurance**  
Comprehensive, easy & Simple
- Extended Warranties**  
Coverage for up to 5 years




**Purchase Price** **\$16,995**  
Includes GST, Registration & Licensing

Finance may be available on this vehicle. Ask one of our friendly staff for more information.



Gain peace of mind with Mechanical Breakdown Insurance. **Ask us how.**



- Top features**
- » ABS Braking w/ EBD
  - » Air Bag(s)
  - » Air Conditioning
  - » Alloys
  - » Central Locking
  - » Electric Mirrors
  - » Electric Windows
  - » Fog Lights
  - » Leather Seats
  - » Power Steering
  - » Rear Wiper
  - » Sunroof

Body Style  
**5 door, RV-SUV**

Odometer  
**86,048 km**

Engine  
**2000 cc**

Fuel Type  
**Petrol**

Transmission  
**Automatic**

Wheels  
-

VIN  
**7AT0DH7HX24350918**

Interior  
**Black**

Safety



Based on 2023 UCSR rating for 07-13 models

Reg No.

-

Ext Colour  
**Black**

History  
**Ex-Overseas**

Seats  
**5 seats, Leather**

CO2 Emissions  
★★★★☆  
**204 grams/km**

Energy Economy  
★★★★☆

**Annual fuel cost of \$3,330**  
**8.5L per 100km**

Cost per year is an estimate based on petrol price of \$2.80 per litre and an average distance of 14000 km. Emissions and Energy Economy figures standardised to 3P WLTP.

**Stock ID: 18651**

**Darryl Phillips**  
MOTOR COMPANY

Darryl Phillips Motor Company | Phone 03 3082441 | Email terence@dpmc.co.nz  
600 East Street, Ashburton 7700, New Zealand  
www.darrylphillips.co.nz