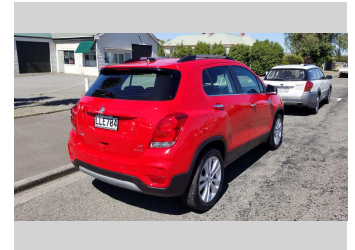
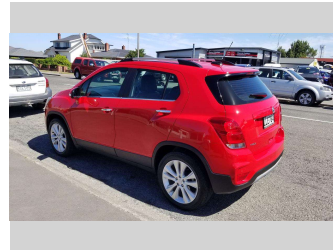
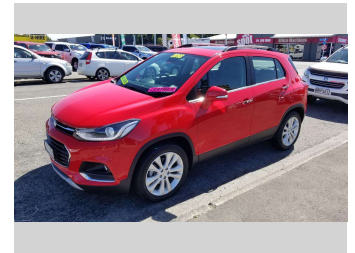


# 2018 Holden Trax LTZ




**Darryl Phillips**  
MOTOR COMPANY  
Ph. 03 308 2441 M. 027 275 8617 www.darrylphillips.co.nz

- Trade ins are welcome**  
Easy straight forward process
- Easy & Fast Finance**  
Quick & Affordable
- Car Insurance**  
Comprehensive, easy & simple
- Extended Warranties**  
Coverage for up to 5 years




**Purchase Price** **\$17,995**  
Includes GST, Registration & Licensing

Finance may be available on this vehicle. Ask one of our friendly staff for more information.



Gain peace of mind with Mechanical Breakdown Insurance. **Ask us how.**



- Top features**
- » ABS Brakes
  - » Air Bag(s)
  - » Air Conditioning
  - » Alloys
  - » Bluetooth
  - » Central Locking
  - » Climate Control
  - » Cruise Control
  - » Electric Mirrors
  - » Electric Windows
  - » Fog Lights
  - » Immobiliser
  - » Keyless Entry
  - » Leather Seats
  - » NZ New
  - » Overdrive
  - » Power Steering
  - » Rear Wiper

Body Style  
**5 door, RV-SUV**

Odometer  
**93,905 km**

Engine  
**1400 cc**

Fuel Type  
**Petrol**

Transmission  
**Automatic**

Wheels  
-

VIN  
**KL3BA7689JB630356**

Interior  
**Charcoal**

Safety



Based on 2023 UCSR rating for 13-20 models

Reg No.  
**LLE704**

Ext Colour  
**Red**

History  
-

Seats  
**5 seats**

CO2 Emissions  
**★★★★☆**  
**172 grams/km**

Energy Economy  
**★★☆☆☆**

**Annual fuel cost of \$2,940**  
**7.5L per 100km**

Cost per year is an estimate based on petrol price of \$2.80 per litre and an average distance of 14000 km. Emissions and Energy Economy figures standardised to 3P WLTP.

**Stock ID: 18855**

**Darryl Phillips**  
MOTOR COMPANY

Darryl Phillips Motor Company | Phone 03 3082441 | Email terence@dpmc.co.nz  
600 East Street, Ashburton 7700, New Zealand  
www.darrylphillips.co.nz