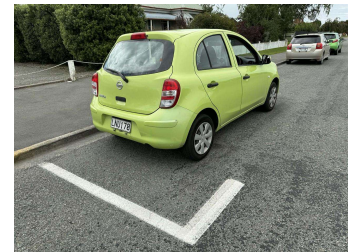
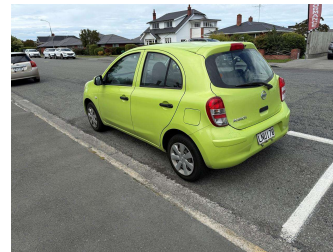
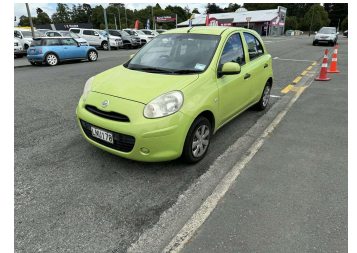
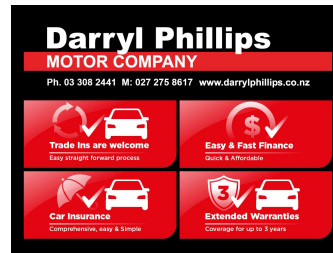


# 2012 Nissan March



Purchase Price

**\$5,995**

Includes GST, Registration & Licensing

Finance may be available on this vehicle. Ask one of our friendly staff for more information.



Gain peace of mind with Mechanical Breakdown Insurance. **Ask us how.**



## Top features

- » ABS Brakes
- » Air Bag(s)
- » Air Conditioning
- » Cam Chain Engine
- » Central Locking
- » Climate Control
- » EFI
- » Electric Mirrors
- » Electric Windows
- » Immobiliser
- » Overdrive
- » Rear Wiper
- » Remote Locking

Body Style

**5 door, Hatchback**

Odometer

**147,500 km**

Engine

**1200 cc**

Fuel Type

**Petrol**

Transmission

**Automatic**

Wheels

-

VIN

**7AT0DH0KX18031213**

Interior

**Charcoal**

Safety



Based on 2025 VSRR rating

Reg No.

**LNU170**

Ext Colour

**Green**

History

-

Seats

**5 seats**

CO2 Emissions

★★★★☆

**129 grams/km**

Energy Economy

★★★★☆☆

**Annual fuel cost of \$2,200**

**5.6L per 100km**

Cost per year is an estimate based on petrol price of \$2.80 per litre and an average distance of 14000 km. Emissions and Energy Economy figures standardised to 3P WLTP.

**Stock ID: 20135**

**Darryl Phillips**  
MOTOR COMPANY

Darryl Phillips Motor Company | Phone 03 3082441 | Email [terence@dpmc.co.nz](mailto:terence@dpmc.co.nz)  
600 East Street, Ashburton 7700, New Zealand  
[www.darrylphillips.co.nz](http://www.darrylphillips.co.nz)