

# 2008 Nissan Dualis



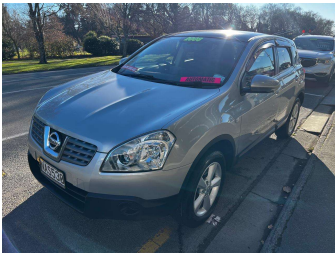
**Darryl Phillips**  
**MOTOR COMPANY**  
Ph. 03 308 2441 M: 027 275 8617 www.darrylphillips.co.nz

**Trade Ins are welcome**  
Easy straight forward process

**Easy & Fast Finance**  
Quick & Affordable

**Car Insurance**  
Comprehensive, easy & simple

**Extended Warranties**  
Coverage for up to 5 years



Purchase Price

**\$8,995**

Includes GST, Registration & Licensing

Finance may be available on this vehicle. Ask one of our friendly staff for more information.

**Darryl Phillips**  
**MOTOR COMPANY**

Gain peace of mind with Mechanical Breakdown Insurance. **Ask us how.**

**JANSSEN**  
**INSURANCE**

Top features

» ABS Brakes

» Air Bag(s)

» Air Conditioning

» Alloys

» Bluetooth

» Central Locking

» Climate Control

» EFI

» Electric Mirrors

» Electric Mirrors (Retr...

» Electric Windows

» Immobiliser

» Keyless Entry

» Overdrive

» Rear Wiper

» Remote Locking

» Reversing Camera

» Tow Bar

Body Style  
**5 door, Hatchback**

Odometer  
**123,500 km**

Engine  
**2000 cc**

Fuel Type  
**Petrol**

Transmission  
**Automatic**

Wheels  
**-**

VIN  
**7AT0DH7HX20205118**

Interior  
**Charcoal**

Safety



Based on 2024 UCSR rating for 07-13 models

Reg No.  
**NAS530**

Ext Colour  
**Silver**

History  
**-**

Seats  
**5 seats**

CO2 Emissions  
**★★★★☆**  
**197 grams/km**

Energy Economy  
**★★☆☆☆☆**

**Annual fuel cost of \$3,210**  
**8.2L per 100km**

Cost per year is an estimate based on petrol price of \$2.80 per litre and an average distance of 14000 km. Emissions and Energy Economy figures standardised to 3P WLTP.

**Stock ID: 19669**

**Darryl Phillips**  
**MOTOR COMPANY**

Darryl Phillips Motor Company | Phone 03 3082441 | Email [terence@dpmc.co.nz](mailto:terence@dpmc.co.nz)  
600 East Street, Ashburton 7700, New Zealand  
[www.darrylphillips.co.nz](http://www.darrylphillips.co.nz)