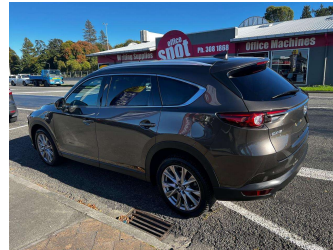


# 2019 Mazda CX-8 25S Pro Activ



**Darryl Phillips**  
MOTOR COMPANY  
Ph. 03 308 2441 M. 027 275 8617 www.darrylphillips.co.nz

- Trade Ins are welcome**  
Easy straight forward process
- Easy & Fast Finance**  
Quick & Affordable
- Car Insurance**  
Comprehensive, easy & Simple
- Extended Warranties**  
Coverage for up to 5 years



**Purchase Price**  
Includes GST, Registration & Licensing

## \$36,995

Finance may be available on this vehicle. Ask one of our friendly staff for more information.

Gain peace of mind with Mechanical Breakdown Insurance. **Ask us how.**

**Top features**

- » 7 Seater
- » ABS Brakes
- » Air Conditioning
- » Alloys
- » Bluetooth
- » Body Kit (Factory)
- » Central Locking
- » Climate Control
- » Cruise Control
- » Digital Display
- » EFI
- » Electric Mirrors
- » Electric Windows
- » ESC
- » Fog Lights
- » Immobiliser
- » Overdrive
- » Parking Sensors

Body Style  
**5 door, RV-SUV**

Odometer  
**29,700 km**

Engine  
**2500 cc**

Fuel Type  
**Petrol**

Transmission  
**Automatic**

Wheels  
-

VIN  
**7AT0C149X25107802**

Interior  
**Charcoal**

Safety



Based on 2024 VSRR rating

Reg No.

-

Ext Colour  
**Brown**

History

-

Seats  
**7 seats**

CO2 Emissions  
**★★★★☆**  
**187 grams/km**

Energy Economy  
**★★☆☆☆☆**

**Annual fuel cost of \$3,180**  
**8.1L per 100km**

Cost per year is an estimate based on petrol price of \$2.80 per litre and an average distance of 14000 km. Emissions and Energy Economy figures standardised to 3P WLTP.

**Stock ID: 19473**



Darryl Phillips Motor Company | Phone 03 3082441 | Email [terence@dpmc.co.nz](mailto:terence@dpmc.co.nz)  
600 East Street, Ashburton 7700, New Zealand  
[www.darrylphillips.co.nz](http://www.darrylphillips.co.nz)