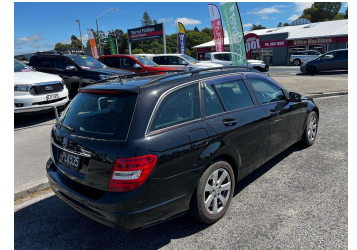


# 2013 Mercedes-Benz C180



**Darryl Phillips**  
MOTOR COMPANY  
Ph. 03 308 2441 M. 027 275 8617 www.darrylphillips.co.nz

- Trade ins are welcome**  
Easy straight forward process
- Easy & Fast Finance**  
Quick & Affordable
- Car Insurance**  
Comprehensive, easy & simple
- Extended Warranties**  
Coverage for up to 5 years



**Purchase Price** **\$9,995**  
Includes GST, Registration & Licensing

Finance may be available on this vehicle. Ask one of our friendly staff for more information.

**Darryl Phillips**  
MOTOR COMPANY

Gain peace of mind with Mechanical Breakdown Insurance. **Ask us how.**

**Ji JANSSEN**  
INSURANCE

**Top features**

- » ABS Brakes
- » Air Bag(s)
- » Air Conditioning
- » Alloys
- » Bluetooth
- » Central Locking
- » Climate Control
- » Cruise Control
- » EFI
- » Electric Mirrors
- » Electric Seats
- » Electric Windows
- » Fog Lights
- » Immobiliser
- » Overdrive
- » Rear Wiper
- » Remote Locking
- » Reversing Camera

Body Style  
**5 door, Station Wagon**

Odometer  
**96,000 km**

Engine  
**1800 cc**

Fuel Type  
**Petrol**

Transmission  
**Automatic**

Wheels  
-

VIN  
**WDD2042492G044971**

Interior  
**Charcoal**

Safety

**5 star**  
safety rating

Based on 2024 UCSR rating for 07-15 models

Reg No.  
**PLK535**

Ext Colour  
**Black**

History  
-

Seats  
**5 seats**

CO2 Emissions  
**★★★★☆**  
**195 grams/km**

Energy Economy  
**★★☆☆☆**  
**Annual fuel cost of \$3,250**  
**8.3L per 100km**

Cost per year is an estimate based on petrol price of \$2.80 per litre and an average distance of 14000 km. Emissions and Energy Economy figures standardised to 3P WLTP.

**Stock ID: 19497**

**Darryl Phillips**  
MOTOR COMPANY

Darryl Phillips Motor Company | Phone 03 3082441 | Email terence@dpmc.co.nz  
600 East Street, Ashburton 7700, New Zealand  
www.darrylphillips.co.nz