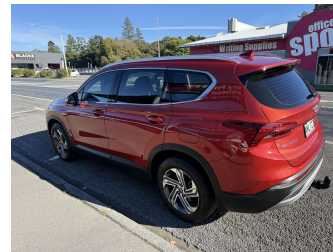


# 2021 Hyundai Santa Fe



**Darryl Phillips**  
MOTOR COMPANY  
Ph. 03 308 2441 M: 027 275 8617 www.darrylphillips.co.nz

- Trade ins are welcome**  
Easy straight forward process
- Easy & Fast Finance**  
Quick & Affordable
- Car Insurance**  
Comprehensive, easy & simple
- Extended Warranties**  
Coverage for up to 5 years



**Purchase Price**  
Includes GST, Registration & Licensing

## \$27,995

Finance may be available on this vehicle. Ask one of our friendly staff for more information.

Gain peace of mind with Mechanical Breakdown Insurance. **Ask us how.**

**Top features**

- » 4WD
- » 7 Seater
- » ABS Brakes
- » Air Bag(s)
- » Air Conditioning
- » Alloys
- » Bluetooth
- » Central Locking
- » Child Seat Anchor Poin...
- » Climate Control
- » Cruise Control
- » EFI
- » Electric Mirrors
- » Electric Windows
- » Immobiliser
- » Keyless Entry
- » NZ New
- » Overdrive

Body Style  
**5 door, SUV / 4x4**

Odometer  
**110,600 km**

Engine  
**2500 cc**

Fuel Type  
**Petrol**

Transmission  
**Automatic**

Wheels  
-

VIN  
**KMHS281KSMU378401**

Interior  
**Charcoal**

Safety



Based on 2025 VSRR rating

Reg No.  
**NML723**

Ext Colour  
**Orange**

History  
-

Seats  
**7 seats**

CO2 Emissions  
**★★★☆☆☆**  
**222 grams/km**

Energy Economy  
**★★★★☆☆**

**Annual fuel cost of \$3,800**  
**9.7L per 100km**

Cost per year is an estimate based on petrol price of \$2.80 per litre and an average distance of 14000 km. Emissions and Energy Economy figures standardised to 3P WLTP.

**Stock ID: 20238**

**Darryl Phillips**  
MOTOR COMPANY

Darryl Phillips Motor Company | Phone 03 3082441 | Email terence@dpmc.co.nz  
600 East Street, Ashburton 7700, New Zealand  
www.darrylphillips.co.nz