

# 2008 Mercedes-Benz ML 350



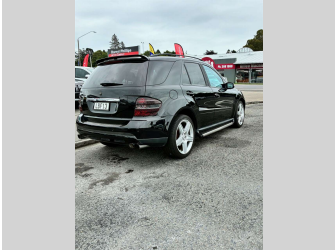
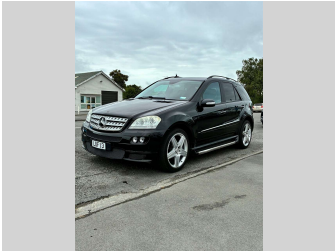
**Darryl Phillips**  
**MOTOR COMPANY**  
Ph. 03 308 2441 M: 027 275 8617 www.darrylphillips.co.nz

**Trade Ins are welcome**  
Easy straight forward process

**Easy & Fast Finance**  
Quick & Affordable

**Car Insurance**  
Comprehensive, easy & simple

**Extended Warranties**  
Coverage for up to 5 years



Purchase Price

**\$12,995**

Includes GST, Registration & Licensing

Finance may be available on this vehicle. Ask one of our friendly staff for more information.

**Darryl Phillips**  
**MOTOR COMPANY**

Gain peace of mind with Mechanical Breakdown Insurance. **Ask us how.**

**provident**  
insurance

Top features

» Air Bag(s)

» Fog Lights

» Air Conditioning

» Heated Seats

» Alloys

» Parking Sensors

» Bluetooth

» Rear Wiper

» Central Locking

» Remote Locking

» Climate Control

» Reversing Camera

» Electric Mirrors

» Running Boards

» Electric Seats

» Electric Windows

Body Style

**5 door, SUV / 4x4**

Odometer

**93,500 km**

Engine

**3000 cc**

Fuel Type

**Petrol**

Transmission

**Automatic**

Wheels

-

VIN

**WDC1641862A299939**

Interior

**Charcoal**

Safety

**3 star safety rating**

Based on 2025 VSRR rating

Reg No.

**LBF13**

Ext Colour

**Black**

History

-

Seats

**5 seats**

CO2 Emissions

☆☆☆☆☆☆

Energy Economy

☆☆☆☆☆☆

**Annual fuel cost not available**

Energy Consumption unknown.

**Stock ID: 20052**

**Darryl Phillips**  
**MOTOR COMPANY**

Darryl Phillips Motor Company | Phone 03 3082441 | Email [terence@dpmc.co.nz](mailto:terence@dpmc.co.nz)  
600 East Street, Ashburton 7700, New Zealand  
[www.darrylphillips.co.nz](http://www.darrylphillips.co.nz)