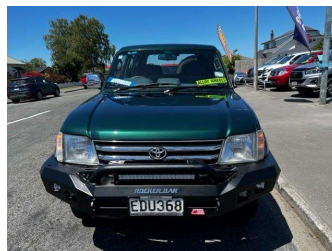


1997 Toyota Land Cruiser Prado




Darryl Phillips
MOTOR COMPANY
Ph. 03 308 2441 M. 027 275 8617 www.darrylphillips.co.nz

- Trade ins are welcome**
Easy straight forward process
- Easy & Fast Finance**
Quick & Affordable
- Car Insurance**
Comprehensive, easy & simple
- Extended Warranties**
Coverage for up to 5 years




Purchase Price **\$18,995**
Includes GST, Registration & Licensing

Finance may be available on this vehicle. Ask one of our friendly staff for more information.



Gain peace of mind with Mechanical Breakdown Insurance. Ask us how.



Top features

- » 4WD
- » ABS Brakes
- » Air Bag(s)
- » Air Conditioning
- » Alloys
- » Central Locking
- » Electric Mirrors
- » Electric Windows
- » Overdrive
- » Remote Locking
- » Tow Bar
- » Turbo Diesel

Body Style
4 door, Ute

Odometer
317,430 km

Engine
3000 cc

Fuel Type
Diesel


Transmission
Automatic

Wheels
-

VIN
7A8H60H0707068974

Interior
Charcoal

Safety



Based on 2023 UCSR rating for 96-02 models

Reg No.
EDU368

Ext Colour
Green

History
-

Seats
-

CO2 Emissions
☆☆☆☆☆☆

Energy Economy
☆☆☆☆☆☆

Annual fuel cost not available

Energy Consumption unknown. Emissions and Energy Economy figures standardised to 3P WLTP.

Stock ID: 18680



Darryl Phillips Motor Company | Phone 03 3082441 | Email terence@dpmc.co.nz
600 East Street, Ashburton 7700, New Zealand
www.darrylphillips.co.nz