

2014 Toyota Land Cruiser Prado GX LTD



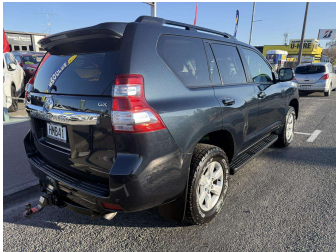
Darryl Phillips
MOTOR COMPANY
Ph. 03 308 2441 M: 027 275 8617 www.darrylphillips.co.nz

Trade Ins are welcome
Easy straight forward process

Easy & Fast Finance
Quick & Affordable

Car Insurance
Comprehensive, easy & simple

Extended Warranties
Coverage for up to 5 years



Purchase Price

\$34,995

Includes GST, Registration & Licensing

Finance may be available on this vehicle. Ask one of our friendly staff for more information.

Darryl Phillips
MOTOR COMPANY

Gain peace of mind with Mechanical Breakdown Insurance. **Ask us how.**

provident
insurance

Top features

» 4WD

» 7 Seater

» ABS Brakes

» Air Bag(s)

» Air Conditioning

» Alloys

» Bluetooth

» Central Locking

» Climate Control

» Cruise Control

» Electric Mirrors

» Electric Windows

» Immobiliser

» NZ New

» Overdrive

» Parking Sensors

» Rear Wiper

» Remote Locking

Body Style

5 door, SUV / 4x4

Odometer

199,700 km

Engine

3000 cc

Fuel Type

Diesel

Transmission

Automatic

Wheels

-

VIN

JTEBH3FJ80K134662

Interior

Charcoal

Safety

5 star safety rating

Based on 2024 UCSR rating for 09-22 models

Reg No.

HMB41

Ext Colour

Dark Blue

History

-

Seats

7 seats

CO2 Emissions

★ ★ ☆ ☆ ☆ ☆

260 grams/km

Energy Economy

★ ★ ☆ ☆ ☆ ☆

Annual fuel cost of \$3,780

9.7L per 100km

Cost per year is an estimate based on diesel price of \$2.00 per litre and an average distance of 14000 km. Includes Road User Charges (RUC). Emissions and Energy Economy figures standardised to 3P WLTP.

Stock ID: 19861

Darryl Phillips
MOTOR COMPANY

Darryl Phillips Motor Company | Phone 03 3082441 | Email terence@dpmc.co.nz
600 East Street, Ashburton 7700, New Zealand
www.darrylphillips.co.nz