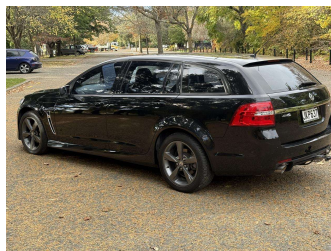


2015 Holden Commodore VF2 SV6



Purchase Price
Includes GST, Registration & Licensing

\$25,995

Finance may be available on this vehicle. Ask one of our friendly staff for more information.

Gain peace of mind with Mechanical Breakdown Insurance. **Ask us how.**

Top features

- » ABS Brakes
- » Air Bag(s)
- » Air Conditioning
- » Alloys
- » Bluetooth
- » Cam Chain Engine
- » Central Locking
- » Child Seat Anchor Poin...
- » Climate Control
- » Cruise Control
- » Digital Display
- » EFI
- » Electric Mirrors
- » Electric Windows
- » Fog Lights
- » Immobiliser
- » Keyless Entry
- » NZ New

Body Style
5 door, Station Wagon

Odometer
122,500 km

Engine
3600 cc

Fuel Type
Petrol

Transmission
Automatic

Wheels
-

VIN
6G1FB8E37GL202571

Interior
Charcoal

Safety



Based on 2025 UCSR rating for 13-17 models

Reg No.
JKP637

Ext Colour
Black

History
-

Seats
5 seats

CO2 Emissions
★ ★ ☆ ☆ ☆ ☆
247 grams/km

Energy Economy
★ ☆ ☆ ☆ ☆ ☆

Annual fuel cost of \$4,080
10.4L per 100km

Cost per year is an estimate based on petrol price of \$2.80 per litre and an average distance of 14000 km. Emissions and Energy Economy figures standardised to 3P WLTP.

Stock ID: 20204



Darryl Phillips Motor Company | Phone 03 3082441 | Email terence@dpmc.co.nz
600 East Street, Ashburton 7700, New Zealand
www.darrylphillips.co.nz