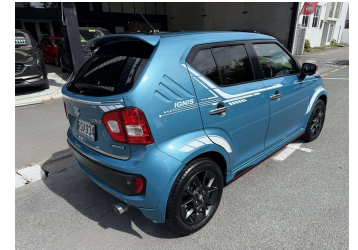


2016 Suzuki Ignis



Darryl Phillips
MOTOR COMPANY
Ph. 03 308 2441 M. 027 275 8617 www.darrylphillips.co.nz

- Trade ins are welcome**
Easy straight forward process
- Easy & Fast Finance**
Quick & Affordable
- Car Insurance**
Comprehensive, easy & simple
- Extended Warranties**
Coverage for up to 3 years



Purchase Price
Includes GST, Registration & Licensing

\$12,995

Finance may be available on this vehicle. Ask one of our friendly staff for more information.

Gain peace of mind with Mechanical Breakdown Insurance. **Ask us how.**

Top features

- » ABS Brakes
- » Air Bag(s)
- » Air Conditioning
- » Alloys
- » Bluetooth
- » Central Locking
- » Child Seat Anchor Poin...
- » Climate Control
- » Cruise Control
- » EFI
- » Electric Mirrors
- » Electric Windows
- » Fog Lights
- » Heated Seats
- » Hybrid
- » Immobiliser
- » Keyless Entry
- » Leather Seats

Body Style
5 door, Hatchback

Odometer
90,000 km

Engine
1300 cc, Hybrid

Fuel Type
Electricity

Transmission
Automatic

Wheels
-

VIN
7AT0GKDTX25105703

Interior
-

Safety



Based on 2025 VSRR rating

Reg No.
RGA934

Ext Colour
Blue

History
-

Seats
5 seats

CO2 Emissions
★★★★☆
105 grams/km

Energy Economy
★★★★☆☆

Annual fuel cost of \$1,760
4.5L per 100km

Cost per year is an estimate based on petrol price of \$2.80 per litre and an average distance of 14000 km. Emissions and Energy Economy figures standardised to 3P WLTP.

Stock ID: 20142



Darryl Phillips Motor Company | Phone 03 3082441 | Email terence@dpmc.co.nz
600 East Street, Ashburton 7700, New Zealand
www.darrylphillips.co.nz