

# 2013 Hyundai IX35 Elite



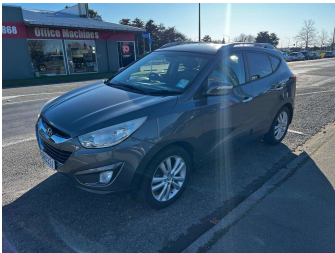
**Darryl Phillips**  
**MOTOR COMPANY**  
Ph. 03 308 2441 M: 027 275 8617 www.darrylphillips.co.nz

**Trade Ins are welcome**  
Easy straight forward process

**Easy & Fast Finance**  
Quick & Affordable

**Car Insurance**  
Comprehensive, easy & simple

**Extended Warranties**  
Coverage for up to 5 years



Purchase Price

**\$12,995**

Includes GST, Registration & Licensing

Finance may be available on this vehicle. Ask one of our friendly staff for more information.

Gain peace of mind with Mechanical Breakdown Insurance. **Ask us how.**

Top features

» 4WD

» ABS Brakes

» Air Bag(s)

» Air Conditioning

» Alloys

» Bluetooth

» Central Locking

» Climate Control

» Cruise Control

» Electric Mirrors

» Electric Seats

» Electric Windows

» Heated Seats

» Immobiliser

» Keyless Entry

» Leather Seats

» NZ New

» Overdrive

Body Style

**5 door, SUV / 4x4**

Odometer

**98,800 km**

Engine

**2000 cc**

Fuel Type

**Diesel**

Transmission

**Automatic**

Wheels

-

VIN

**KMHJU81VSDU633854**

Interior

**Charcoal**

Safety

**4 star safety rating**

Based on 2024 UCSR rating for 10-15 models

Reg No.

**GRB331**

Ext Colour

**Grey**

History

-

Seats

**5 seats**

CO2 Emissions

**★ ★ ★ ☆ ☆ ☆**

**230 grams/km**

Energy Economy

**★ ★ ☆ ☆ ☆ ☆**

**Annual fuel cost of \$3,470**

**8.6L per 100km**

Cost per year is an estimate based on diesel price of \$2.00 per litre and an average distance of 14000 km. Includes Road User Charges (RUC). Emissions and Energy Economy figures standardised to 3P WLTP.

**Stock ID: 19751**

**Darryl Phillips**  
**MOTOR COMPANY**

Darryl Phillips Motor Company | Phone 03 3082441 | Email [terence@dpmc.co.nz](mailto:terence@dpmc.co.nz)  
600 East Street, Ashburton 7700, New Zealand  
[www.darrylphillips.co.nz](http://www.darrylphillips.co.nz)