

2016 Ford Ranger XLT 2WD



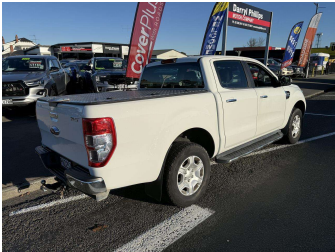
Darryl Phillips
MOTOR COMPANY
Ph. 03 308 2441 M: 027 275 8617 www.darrylphillips.co.nz

Trade Ins are welcome
Easy straight forward process

Easy & Fast Finance
Quick & Affordable

Car Insurance
Comprehensive, easy & simple

Extended Warranties
Coverage for up to 5 years



Purchase Price

\$23,995

Includes GST, Registration & Licensing

Finance may be available on this vehicle. Ask one of our friendly staff for more information.

Darryl Phillips
MOTOR COMPANY

Gain peace of mind with Mechanical Breakdown Insurance. **Ask us how.**

provident
insurance

Top features

» ABS Brakes

» Air Bag(s)

» Air Conditioning

» Alloys

» Bluetooth

» Central Locking

» Climate Control

» Cruise Control

» Electric Mirrors

» Electric Windows

» Fog Lights

» Hard Lid

» Immobiliser

» NZ New

» Overdrive

» Parking Sensors

» Remote Locking

» Reversing Camera

Body Style

4 door, Ute

Odometer

182,500 km

Engine

3200 cc

Fuel Type

Diesel

Transmission

Automatic

Wheels

-

VIN

MNAUMFF50GW565035

Interior

Charcoal

Safety

4 star safety rating

Based on 2024 VSRR rating

Reg No.

PNZ257

Ext Colour

White

History

-

Seats

5 seats

CO2 Emissions

★ ★ ☆ ☆ ☆ ☆

257 grams/km

Energy Economy

★ ★ ☆ ☆ ☆ ☆

Annual fuel cost of \$3,780

9.7L per 100km

Cost per year is an estimate based on diesel price of \$2.00 per litre and an average distance of 14000 km. Includes Road User Charges (RUC). Emissions and Energy Economy figures standardised to 3P WLTP.

Stock ID: 19829

Darryl Phillips
MOTOR COMPANY

Darryl Phillips Motor Company | Phone 03 3082441 | Email terence@dpmc.co.nz
600 East Street, Ashburton 7700, New Zealand
www.darrylphillips.co.nz