

2013 Mazda Axela 1.5 S



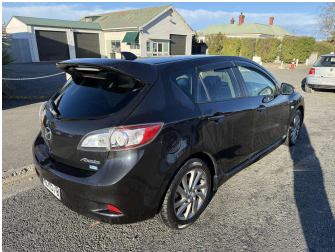
Darryl Phillips
MOTOR COMPANY
Ph. 03 308 2441 M: 027 275 8617 www.darrylphillips.co.nz

Trade Ins are welcome
Easy straight forward process

Easy & Fast Finance
Quick & Affordable

Car Insurance
Comprehensive, easy & simple

Extended Warranties
Coverage for up to 5 years



Purchase Price

\$12,995

Includes GST, Registration & Licensing

Finance may be available on this vehicle. Ask one of our friendly staff for more information.

Darryl Phillips
MOTOR COMPANY

Gain peace of mind with Mechanical Breakdown Insurance. **Ask us how.**

provident
insurance

Top features

» ABS Brakes

» Fog Lights

» Air Bag(s)

» Immobiliser

» Air Conditioning

» Keyless Entry

» Alloys

» Overdrive

» Central Locking

» Rear Wiper

» Climate Control

» Remote Locking

» EFI

» Smart Key

» Electric Mirrors

» Electric Windows

Body Style
5 door, Hatchback

Odometer
79,500 km

Engine
1500 cc

Fuel Type
Petrol

Transmission
Automatic

Wheels
-

VIN
7AT0C13JX20209322

Interior
Charcoal

Safety



Based on 2024 UCSR rating for 09-13 models

Reg No.
MZM570

Ext Colour
Black

History
-

Seats
5 seats

CO2 Emissions
★★★★★
174 grams/km

Energy Economy
★★☆☆☆

Annual fuel cost of \$2,820
7.2L per 100km

Cost per year is an estimate based on petrol price of \$2.80 per litre and an average distance of 14000 km. Emissions and Energy Economy figures standardised to 3P WLTP.

Stock ID: 19848

Darryl Phillips
MOTOR COMPANY

Darryl Phillips Motor Company | Phone 03 3082441 | Email terence@dpmc.co.nz
600 East Street, Ashburton 7700, New Zealand
www.darrylphillips.co.nz