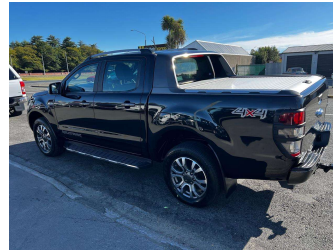
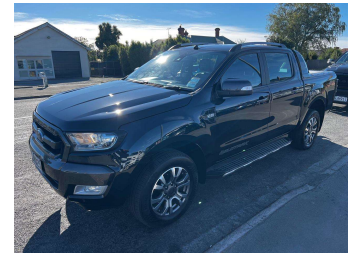


2015 Ford Ranger Wildtrak



Darryl Phillips
MOTOR COMPANY
Ph. 03 308 2441 M: 027 275 8617 www.darrylphillips.co.nz

- Trade ins are welcome**
Easy straight forward process
- Easy & Fast Finance**
Quick & Affordable
- Car Insurance**
Comprehensive, easy & simple
- Extended Warranties**
Coverage for up to 5 years



Purchase Price
Includes GST, Registration & Licensing

\$34,995

Finance may be available on this vehicle. Ask one of our friendly staff for more information.

Gain peace of mind with Mechanical Breakdown Insurance. **Ask us how.**

Top features

- » 4WD
- » ABS Brakes
- » Air Bag(s)
- » Air Conditioning
- » Alloys
- » Bluetooth
- » Body Kit (Factory)
- » Central Locking
- » Climate Control
- » Cruise Control
- » Electric Mirrors
- » Electric Seats
- » Electric Windows
- » Fog Lights
- » Heated Seats
- » Immobiliser
- » Leather Seats
- » NZ New

Body Style
4 door, Ute

Odometer
165,800 km

Engine
3200 cc

Fuel Type
Diesel

Transmission
Automatic

Wheels
-

VIN
MNAUMFF50FW501703

Interior
Charcoal

Safety

Based on 2024 VSRR rating

Reg No.
JMQ258

Ext Colour
Black

History
-

Seats
5 seats

CO2 Emissions
★☆☆☆☆
269 grams/km

Energy Economy
★☆☆☆☆
Annual fuel cost of \$3,950
10.3L per 100km

Cost per year is an estimate based on diesel price of \$2.00 per litre and an average distance of 14000 km. Includes Road User Charges (RUC). Emissions and Energy Economy figures standardised to 3P WLTP.

Stock ID: 19493