

2017 Ford Ranger Wildtrak



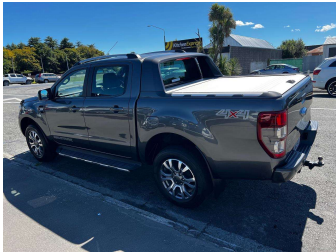
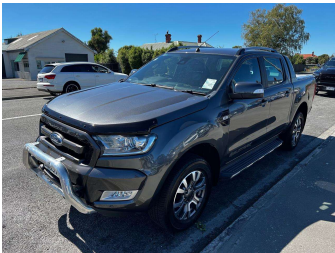
Darryl Phillips
MOTOR COMPANY
Ph. 03 308 2441 M: 027 275 8617 www.darrylphillips.co.nz

Trade Ins are welcome
Easy straight forward process

Easy & Fast Finance
Quick & Affordable

Car Insurance
Comprehensive, easy & simple

Extended Warranties
Coverage for up to 5 years



Purchase Price

\$40,995

Includes GST, Registration & Licensing

Finance may be available on this vehicle. Ask one of our friendly staff for more information.

Gain peace of mind with Mechanical Breakdown Insurance. **Ask us how.**

Top features

» ABS Brakes

» Air Bag(s)

» Air Conditioning

» Alloys

» Bluetooth

» Body Kit (Factory)

» Central Locking

» Climate Control

» Cruise Control

» Digital Display

» Electric Mirrors

» Electric Seats

» Electric Windows

» Fog Lights

» Heated Seats

» Immobiliser

» NZ GPS

» NZ New

Body Style

4 door, Ute

Odometer

89,710 km

Engine

3200 cc

Fuel Type

Diesel

Transmission

Automatic

Wheels

-

VIN

MPBUMFF50HX141686

Interior

Charcoal

Safety

4 star safety rating

Based on 2024 VSRR rating

Reg No.

QNU511

Ext Colour

Grey

History

-

Seats

5 seats

CO2 Emissions

★☆☆☆☆

267 grams/km

Energy Economy

★☆☆☆☆

Annual fuel cost of \$3,920

10.2L per 100km

Cost per year is an estimate based on diesel price of \$2.00 per litre and an average distance of 14000 km. Includes Road User Charges (RUC). Emissions and Energy Economy figures standardised to 3P WLTP.

Stock ID: 19508

Darryl Phillips
MOTOR COMPANY

Darryl Phillips Motor Company | Phone 03 3082441 | Email terence@dpmc.co.nz
600 East Street, Ashburton 7700, New Zealand
www.darrylphillips.co.nz